

UM

IMPROVED DUAL CAVITY TRANSFER ARM

FOR MACHINES BRANDED SIDEL S1*



Our partners :

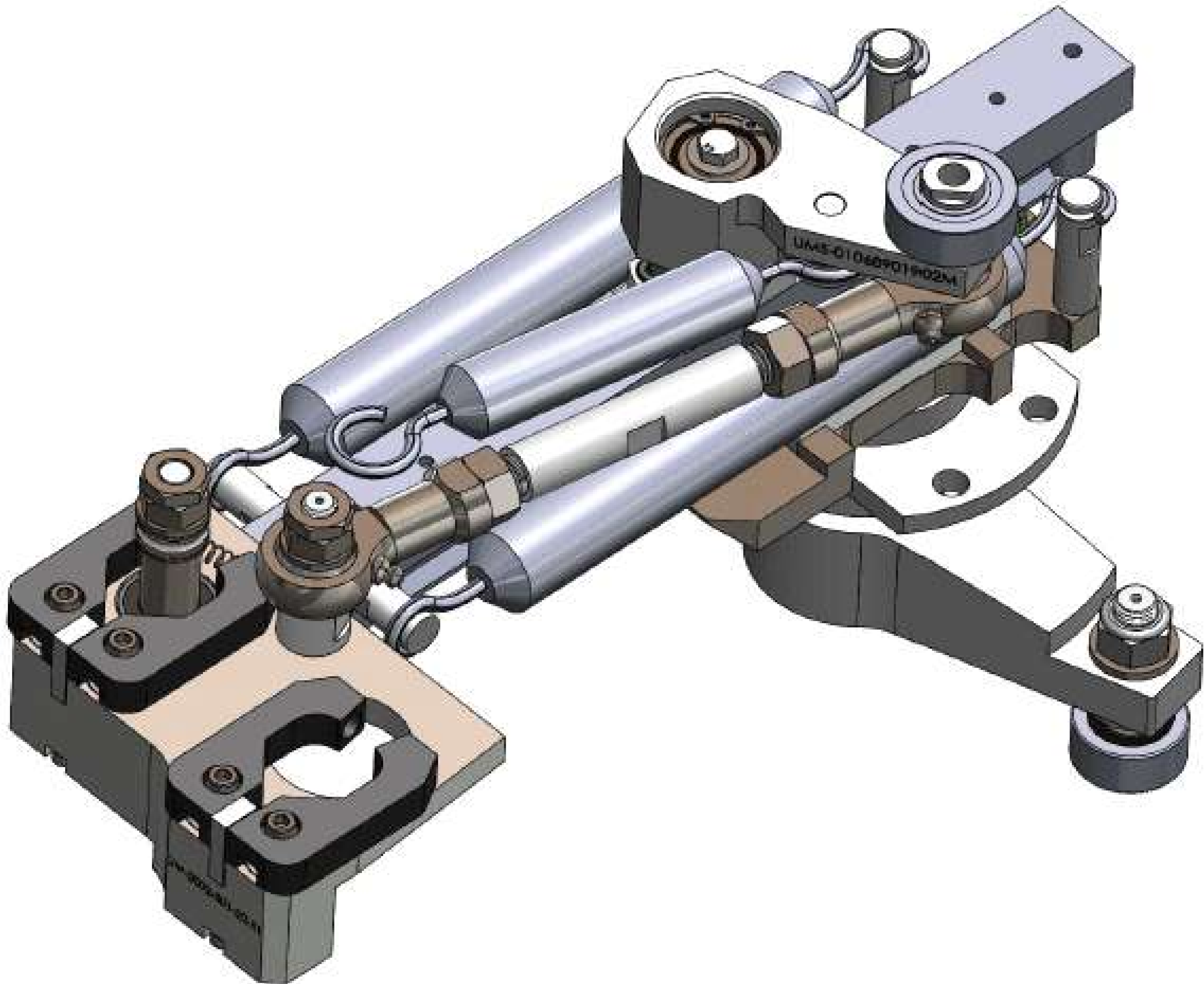


Covirep Sa

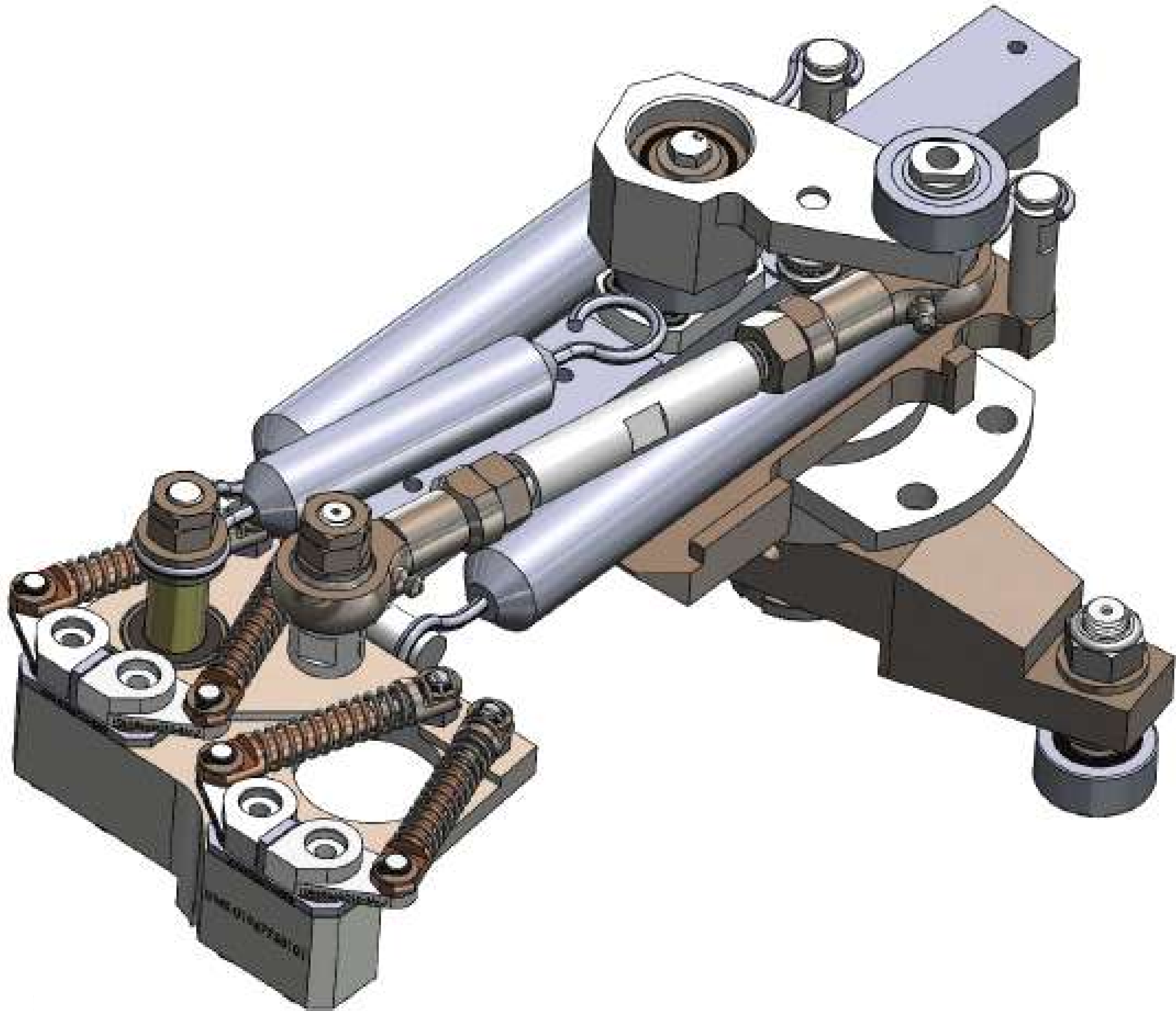


*UM is not a license of Sidel nor have UM parts been approved or authorized by Sidel.

IMPROVED S1 DUAL CAVITY TRANSFER ARM

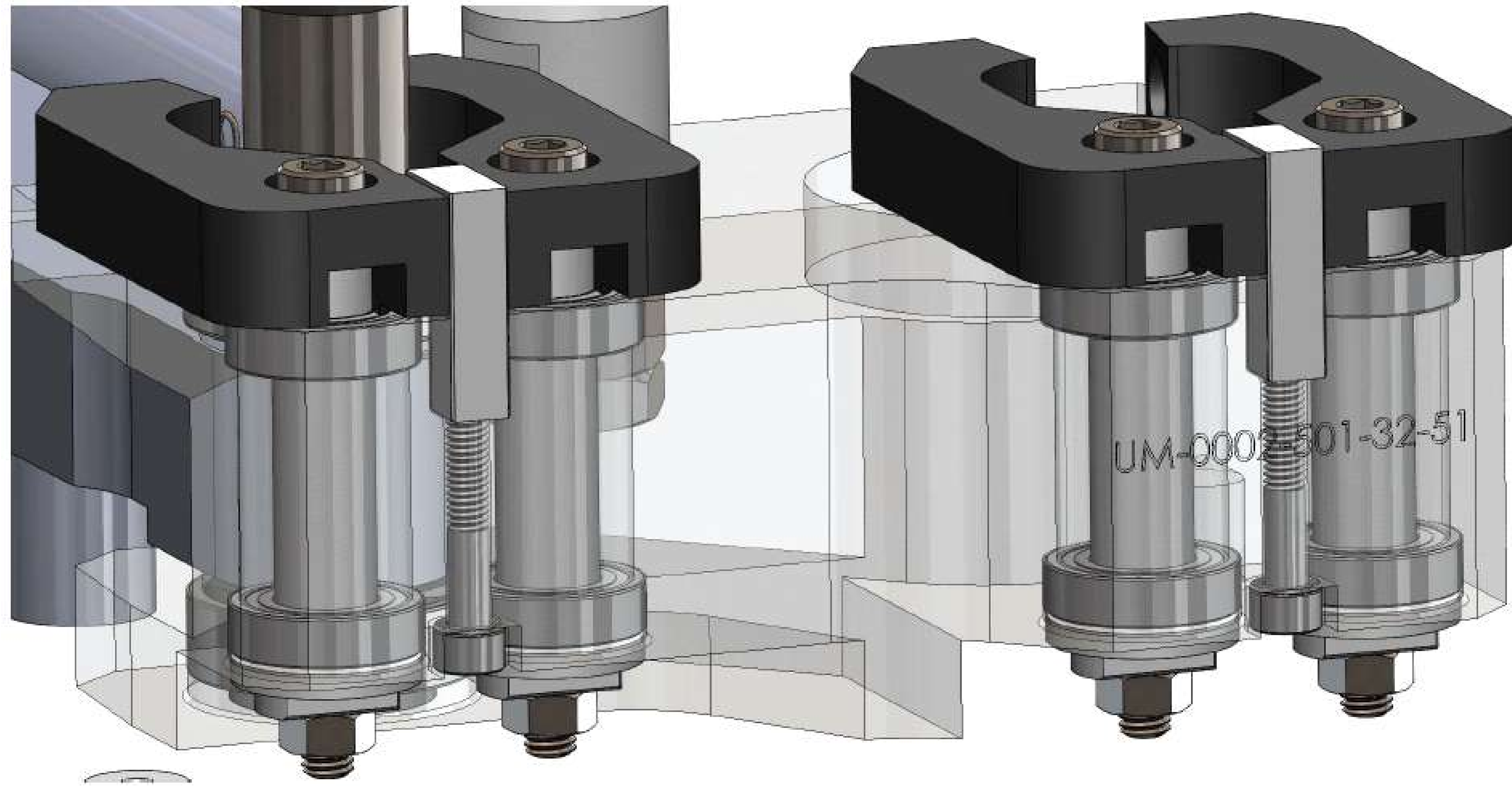


New design

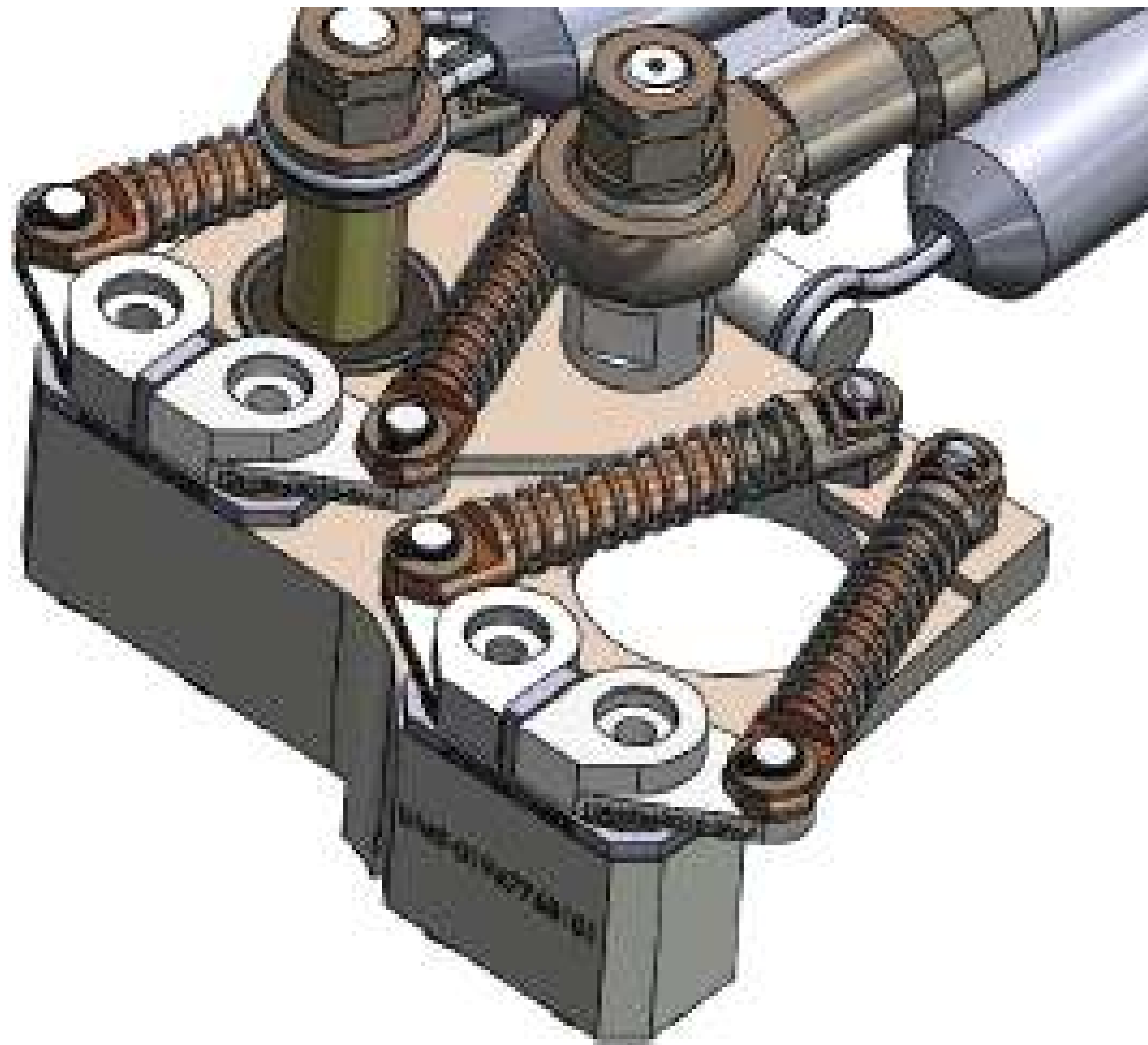


Old design

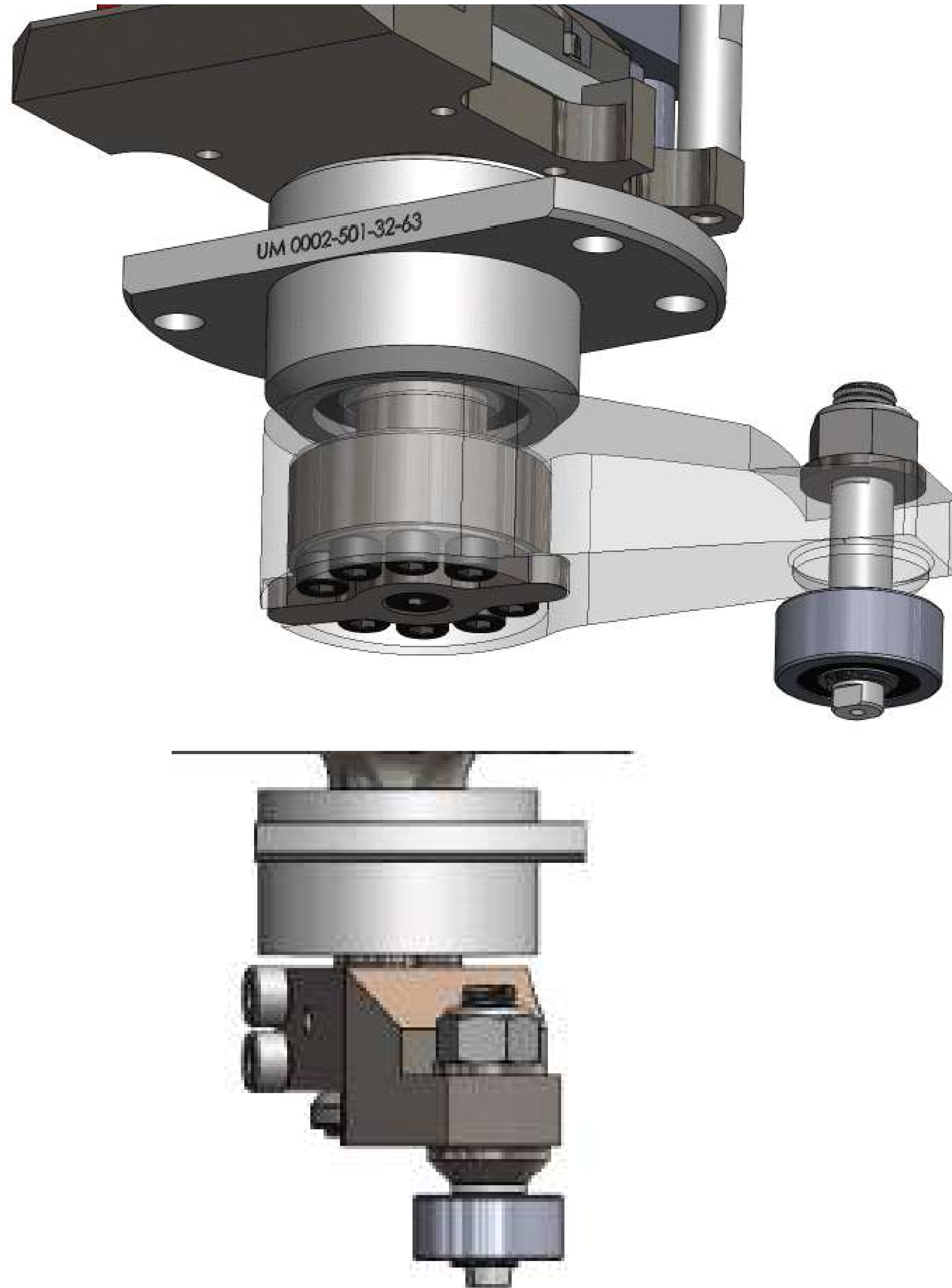
IMPROVED HEAD DESIGN



- Bushings are replaced by bearings
- Ball bearing are captive in case of bearing failure
- Strike plate is removable and can be installed independently
- Aluminum head is less prone to cracking (no recess for bushing design)
- No more snagging from the “shock” like springs

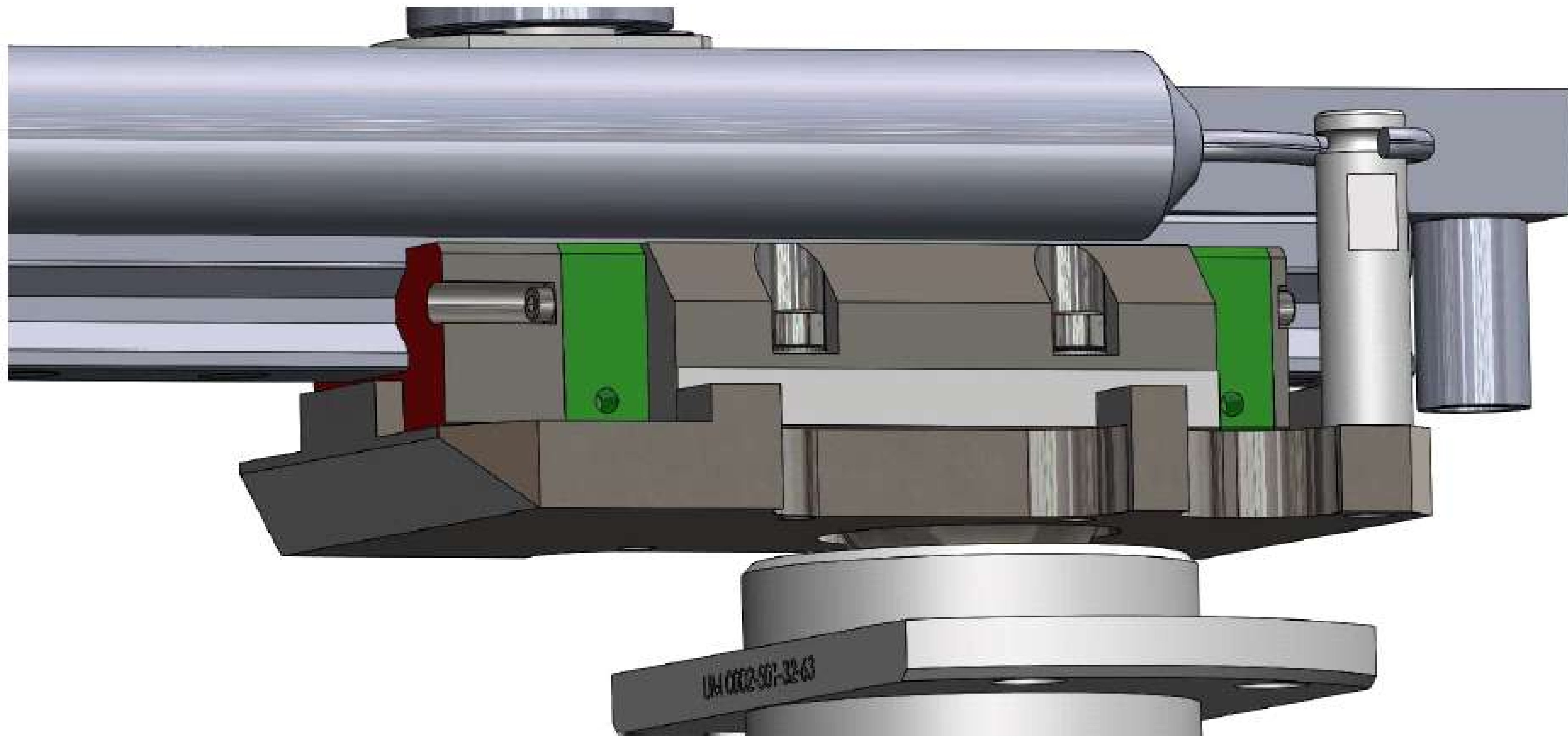


IMPROVED LOWER ARM DESIGN



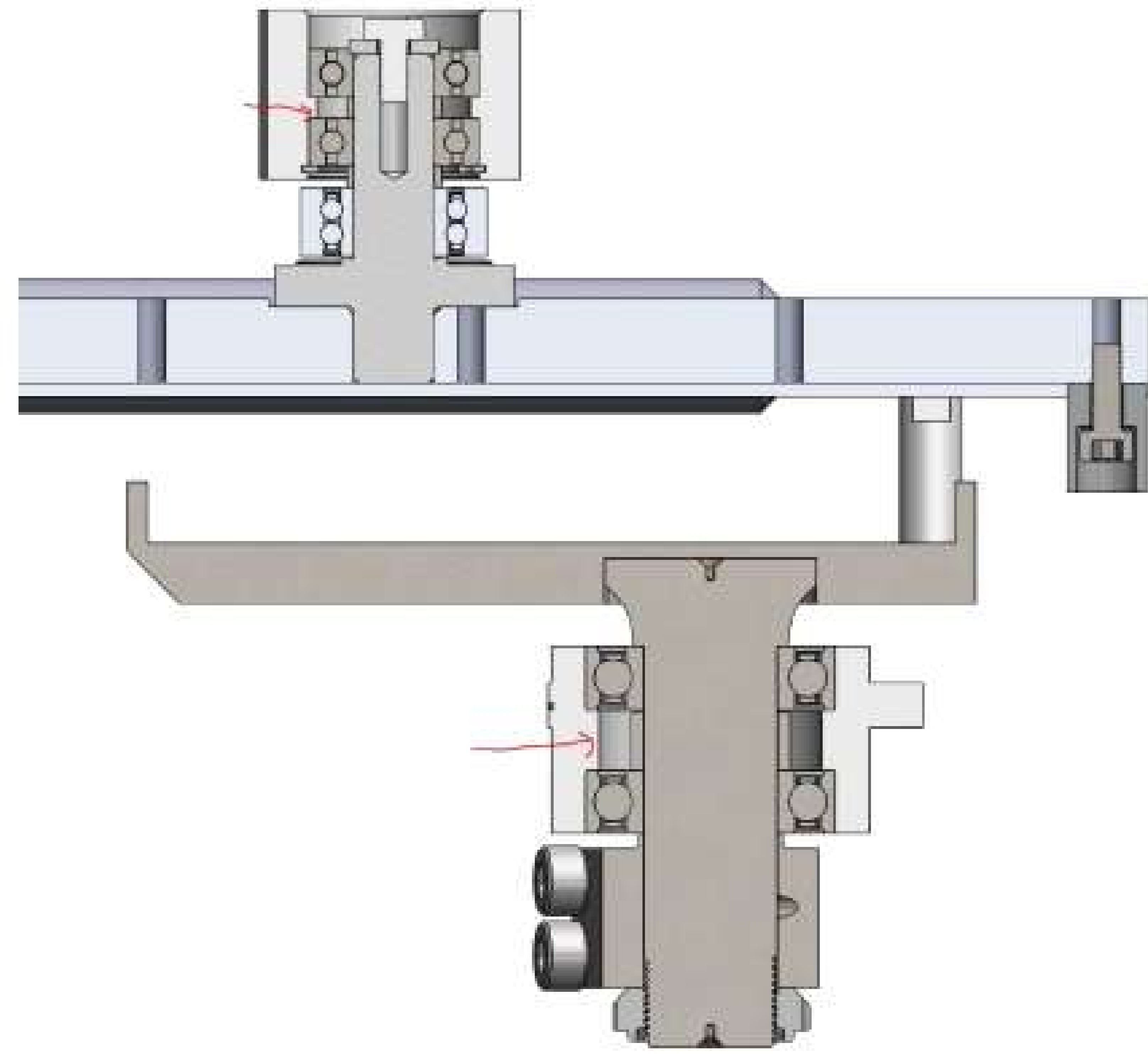
- Taper pin replaced by power lock (taper lock)
- Readjustable in case of crashes
- More precise angle adjustment compared to machined parts

NEW LINEAR BEARING

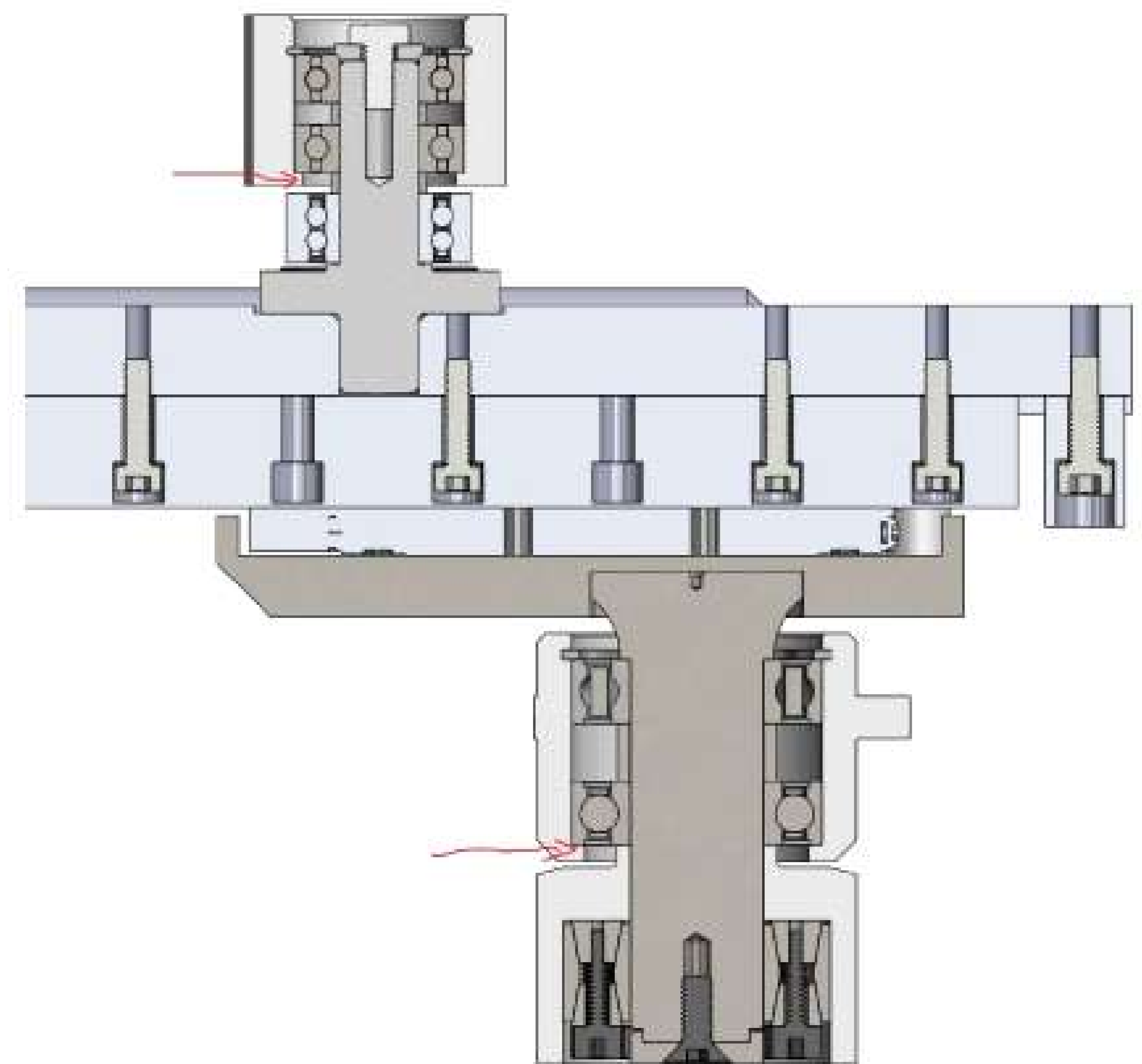


- Rollers instead of ball bearing (less wear, 2x stronger)
- Smaller form factor (reduced weight)
- Integrated lubricator makes it almost maintenance free
- Readily available in U.S.

IMPROVED UPPER ARM & PIVOT DESIGN



Old design



New design

- We moved the bearing stoppers on both to improve maintenance
- Same bearing positioning
- No more need for specialised tool to remove bearings

CONTACT INFORMATION

Hubert Pelletier
Business Development
Associate
+1 514-349-2493

Martin Pelletier
Vice President
Sales
+1 450-454-2493 x244

sales@umallette.com

www.um-inc.com



Our partners



Covirep Sa

